

BALDOR® • RELIANCE 

Product Information Packet

D50250P

250HP, 1750/1900RPM, DC, 506AT, DPFG, F1, N

Part Detail							
Revision:	A	Status:	PRD/A	Change #:		Proprietary:	No
Type:	DC	Prod. Type:		Elec. Spec:	K0113A A	CD Diagram:	15209
Enclosure:	DPFG	Mfg Plant:		Mech. Spec:		Layout:	877-3
Frame:	0506A	Mounting:	F1	Poles:	00	Created Date:	04-09-2015
Base:		Rotation:	R	Insulation:	F	Eff. Date:	03-06-2019
Field Type:		Literature:		Elec. Diagram:		Replaced By:	

Specs			
Enclosure:	DPFG		
Frame:	506AT		
Frame Material:	Steel		
Agency Approvals:	CSA		
Base Indicator:	Rigid		
Bearing Grease Type:	Polyrex EM (-20F +300F)		
Drip Cover:	No Drip Cover		
Duty Rating:	CONT		
Feedback Device:	NO FEEDBACK		
Field Winding Type:	STR. SHUNT		
Heater Indicator:	No Heater		
Insulation Class:	F		
Lifting Lugs:	Standard Lifting Lugs		
Mounting Arrangement:	F1		
Shaft Extension Location:	Pulley End		
Shaft Ground Indicator:	No Shaft Grounding		

Shaft Slinger Indicator:	No Slinger		
Motor Standards:	NEMA		
Thermal Device - Bearing:	None		

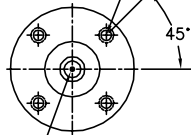
Nameplate NP1734											
CAT.NO.	D50250P			MODEL	T50R8002						
HP	250	RPM	1750/1900		FRAME	0506AT					
ARM V	500	ARM A	392.00		WOUND	STR. SHUNT					
FLD V	150/300	FLD A	14.10-10.04/7.05-5.02								
CONN		OHMS				CL	F				
ENCL	DPFG	DUTY	CONT			MX AMB	40				
P CODE	D	CTSR				SER.F.	1.0				
S/N				E/S	K0113A A						
	BRUSH:50034-2										
O.D.E. BRG.	6216	D.E. BRG.	6218		BRUSH					QTY	

Parts List		
Part Number	Description	Quantity
SA296989	SA T50R8002	1.000 EA
AA016040	AA T50R8002	1.000 EA
036170004DA	DRSCW METRIC NAMEPLATE	4.000 EA
NP1734	NPL,BALDOR DC MTR ALUMINUM	1.000 EA
15209	LABEL CONNECTIONS & TERMINAL MARKIN	1.000 EA
032018004BK	HHCS 5/16-18X1/2 PLATED	4.000 EA
15094	DISHED LOCKWASHER .332 ID, .865 OD	4.000 EA
50009-2	BRUSH ROCKER ASSY FR 50 SERIES	1.000 EA
50034-2SP	BRUSH,500 FR. SERIES E-77 SGL/CARBON	8.000 EA
004824015A	GREASE POLYREX EM	1.100 LB
032018014CK	HHCS 3/8-16X1-3/4L	4.000 EA
032018014EK	HHCS 5/8-11X1-3/4 PLTED.	4.000 EA
032018014EK	HHCS 5/8-11X1-3/4 PLTED.	4.000 EA
032018016CK	HHCS 3/8-16X2 PLATE	4.000 EA
035000001A	ALFTG 1/8" 1610-BL	1.000 EA
035000001A	ALFTG 1/8" 1610-BL	1.000 EA
50028	FAN SHROUD FR500 THIS IS NOT A TEFC SHRD	1.000 EA
50051-9	CE BRKT MACH FR 500 STD FOR LOCKED	1.000 EA
50052-10	FE BRKT MACH FR 500 STD FOR LOCKED	1.000 EA
85XU1008A06	10-32X3/8 TY U DRIVE	4.000 EA
HW4500A17	317400 ALEMITE GREASE RELIEF	1.000 EA
HW4500A17	317400 ALEMITE GREASE RELIEF	1.000 EA
HW5100A18	WAVY WASHER, WB#W6173-058	1.000 EA
032018004BK	HHCS 5/16-18X1/2 PLATED	2.000 EA

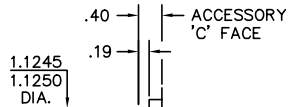
Parts List (continued)		
Part Number	Description	Quantity
032018004BK	HHCS 5/16-18X1/2 PLATED	4.000 EA
032018006DK	HHCS 1/2-13X3/4 PLATED	4.000 EA
034036014AB	EX.TOOTH LCKW 3/8 PLTD.	1.000 EA
15021-1	ACCESSORY FACE COVER FRAME 180-500 SERIE	1.000 EA
15025	TERMINAL BOX BACK FRAME 36 & 40 SERIES #	1.000 EA
15026-1	COVER TERM BOX MACH FR 36 & 40 SERIES	1.000 EA
150906-62	GRDG STUD,HX HD BOLT 3/8-16,W/HD PAINTED	1.000 EA
36246	GASKET,TERM.BOX,FR.360 1/8 THK ARMSTRONG	1.000 EA
032130004BA	HSHCS 1/2 IN.	48.000 EA
40030-1	FLANGENIPPLEMACH400FRAME3"-8N.P.T40030	1.000 EA
50025-1	VENT COVER, FR 500, COMM END	3.000 EA
50025-2	VENT COVER,FAN END #16 GA STEEL	3.000 EA
50026-1	SOLID CVR,FE,FR-500 14GA (.075THK)	1.000 EA
50026-2	SOLID CVR,CE,FR-500 14GA (.075THK)	1.000 EA
50027-1	GASKET CVR,FE,FR-500 3/32 THK CORK/NEOPR	4.000 EA
50027-2	GASKET CVR,CE,FR-500 3/32 THK CORK/N	4.000 EA
HW4001A12	3.00 NPT SQUARE HEAD PIPE PLUG	1.000 EA
004824007BTW	SPECIAL PAINT4824-3BVZ	0.500 EA
034180042JA	KEY FE SHAFT EXT	1.000 EA
18PA1006	PACK FOR 449 SKID; STOCK	1.000 EA

877-3

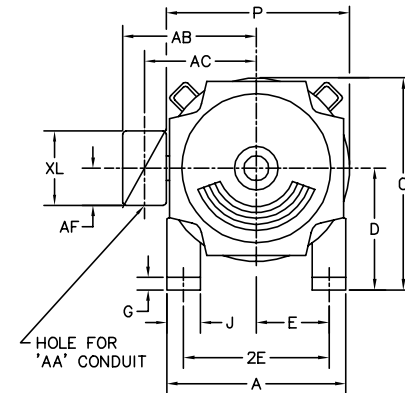
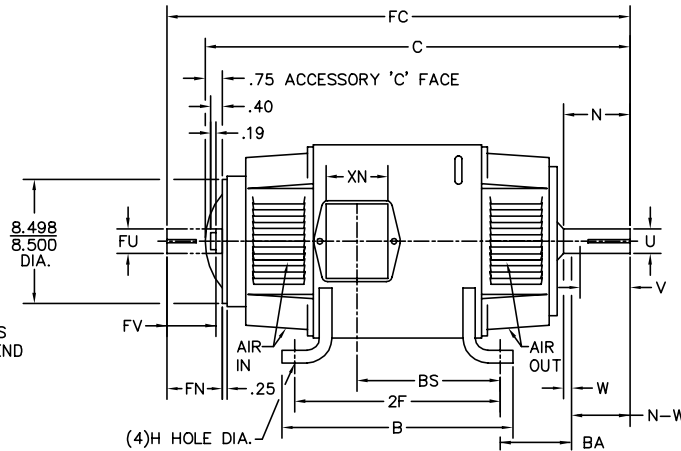
1/2-13UNC-2B THD X 1.00 DEEP
4-HOLES EQUALLY SPACED
ON A 7.250 DIA. B.C.



5/8-11 UNC-2B THD'S
1.25 DEEP IN SHAFT END
(5012, 3/4-10)



STANDARD COMM END
FOR SINGLE SHAFT EXTENSION



FRAME	FOOT MOUNTING						D.E. SHAFT EXTENSION					DRIVE KEY		ACC SHAFT EXTENSION			ACC KEY		FRAME						
	BA	E	2F	G	H	J	N	N-W	U	V	W	KEY-SQ.	KEY-LONG	FN	FU	FV	KEY-SQ.	KEY-LONG	A	B	C	FC	D	O	P
504AT	8.50	10.00	16.00	1.18	1.188	4.50	6.76	6.57	3.250	6.32 ³	.19	.750	5.25	5.95	2.875	5.70	.750	5.00	24.88	18.88	45.75	51.00	12.50 ²	24.91	24.81
506AT	8.50	10.00	20.00	1.18	1.188	4.50	6.76	6.57	3.250	6.32 ³	.19	.750	5.25	5.95	2.875	5.70	.750	5.00	24.88	22.88	49.75	55.00	12.50 ²	24.91	24.81
508AT	8.50	10.00	25.00	1.18	1.188	4.50	6.76	6.57	3.250	6.32 ³	.19	.750	5.25	5.95	2.875	5.70	.750	5.00	24.88	27.88	54.75	60.00	12.50 ²	24.91	24.81
5010AT	8.50	10.00	32.00	1.18	1.188	4.50	6.76	6.57	3.250	6.32 ³	.19	.750	5.25	5.95	2.875	5.70	.750	5.00	24.88	34.88	61.75	67.00	12.50 ²	24.91	24.81
5011AT	8.50	10.00	36.00	1.18	1.188	4.50	6.76	6.57	3.375	6.32 ³	.19	.875	5.25	5.95	2.875	5.70	.750	5.00	24.88	38.88	65.75	71.00	12.50 ²	24.91	24.81
5012AT	8.50	10.00	43.00	1.18	1.188	4.50	7.06	6.87	4.250	6.62 ³	.19	1.000	5.25	5.95	2.875	5.70	1.000	5.00	24.88	45.88	73.75	79.75	12.50 ²	24.91	24.91

FRAME	CONDUIT BOX							ARM APPROX. LBS.FT. ²	APPROXIMATE WEIGHT
	AA	AB	AC	AF	BS	XL	XN		
504AT	3	20.65	16.81	2.62	13.25	11.63	7.76	79.10	1910 ⁵
506AT	3	20.65	16.81	2.62	17.25	11.63	7.76	98.76	2290 ⁵
508AT	3	20.65	16.81	2.62	22.25	11.63	7.76	121.87	2820 ⁵
5010AT	4 ⁴	21.20	16.81	2.84	30.12	13.40	13.50	156	3450 ⁵
5011AT	4 ⁴	21.20	16.81	2.84	34.12	13.40	13.50	161	3810 ⁵
5012AT	4 ⁴	21.20	17.19	2.84	41.12	13.40	13.50	170	4887 ⁵

- 1) SHAFT DIAMETERS TO 1.500 TOLERANCE +.0000 - .0005
SHAFT DIAMETERS ABOVE 1.500 TOLERANCE +.0000 - .0010
SHAFT DIAMETERS TO 1.625 RUNOUT .002 T.I.R. MAX.
SHAFT DIAMETERS ABOVE 1.625 RUNOUT .003 T.I.R. MAX.
- 2) 'D' DIMENSION TOLERANCE +.000 - .060.
- 3) 'V' DIMENSION IS MAX. HUB LENGTH ON SHAFT
- 4) THERE ARE TWO HOLES FOR 4" CONDUIT, SECOND HOLE IS 6" TOWARD DRIVE END.
- 5) TOTAL WEIGHT OF MOTOR.
- 6) ALL DIMENSIONS NOT NOTED ARE NOMINAL DIMENSIONS CONSULT FACTORY FOR TOLERANCES.

FOR F1 OR F2 CONDUIT BOX
LOCATION SEE SALES ORDER

CUSTOMER IS RESPONSIBLE FOR DETERMINING THAT MOTOR PERFORMANCE IS SUITABLE IN THE APPLICATION.

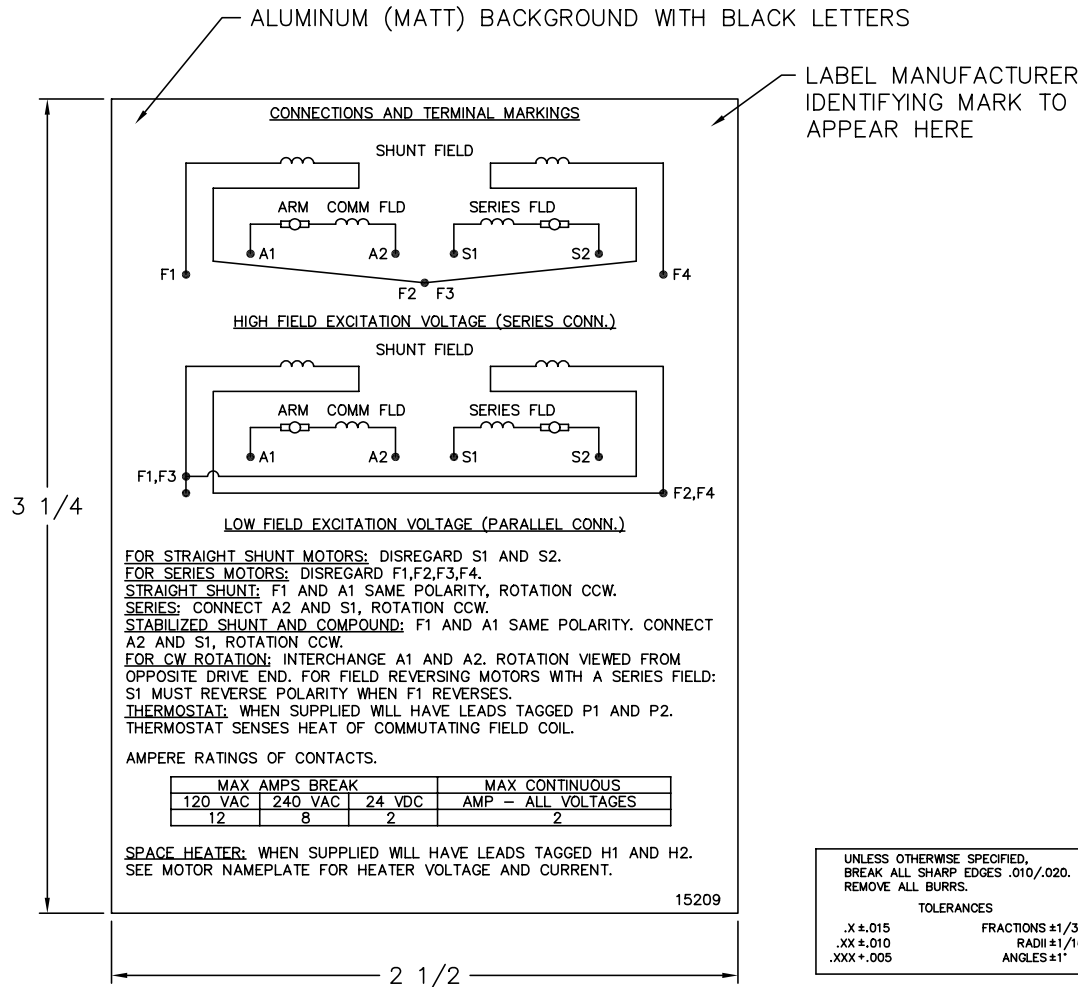
REV. DESC: CHG (5011)U DIM TO 3.375, KEY-SQ TO .875			
REV. LTR: D	BY: MBT	REVISED: 07:59:01 04/22/2003	TDR: 299170
Σ-LL8		FILE: CHB00001040	REF: 877-3
		MTL: -	

BALDOR ELECTRIC Co.

DIM SHEET: 504-5012AT,DPFG

877-3

15209



NOTE:
 MATERIAL .005 MINIMUM FULL HARD ALUMINUM DULL FINISH.
 TEMP. RANGE -20°C TO +125°C MAXIMUM.
 FOR INDOOR AND OUTDOOR MOUNTING BACK.
 METAL, PRESSURE SENSITIVE BACK. MUST MEET CSA STANDARD.
 THE CSA IDENTIFYING MARK OF THE LABEL MANUFACTURER MUST APPEAR IN THE UPPER RIGHT HAND CORNER AS INDICATED.

UNLESS OTHERWISE SPECIFIED, BREAK ALL SHARP EDGES .010/.020. REMOVE ALL BURRS.

TOLERANCES

.X ± .015	FRACTIONS ±1/32
.XX ± .010	RADI ±1/16
.XXX ± .005	ANGLES ±1°

MATL: NOTED

REV: G CHANGE ALL "NAMEPLATE" TEXT TO "LABEL"

60Z91

SCALE: - BY: BKW REVISED: 02/19/97
 FILE: CHB00002485 TDR: 0115147

BALDOR ELECTRIC Co.

LABEL, CONNECTIONS AND TERMINAL MARKINGS DC

15209

Marketing maintained PDF of MN605:

[MN605?ManNumber=MN605](#)